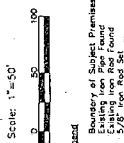
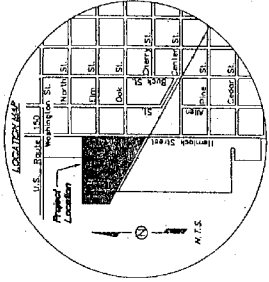
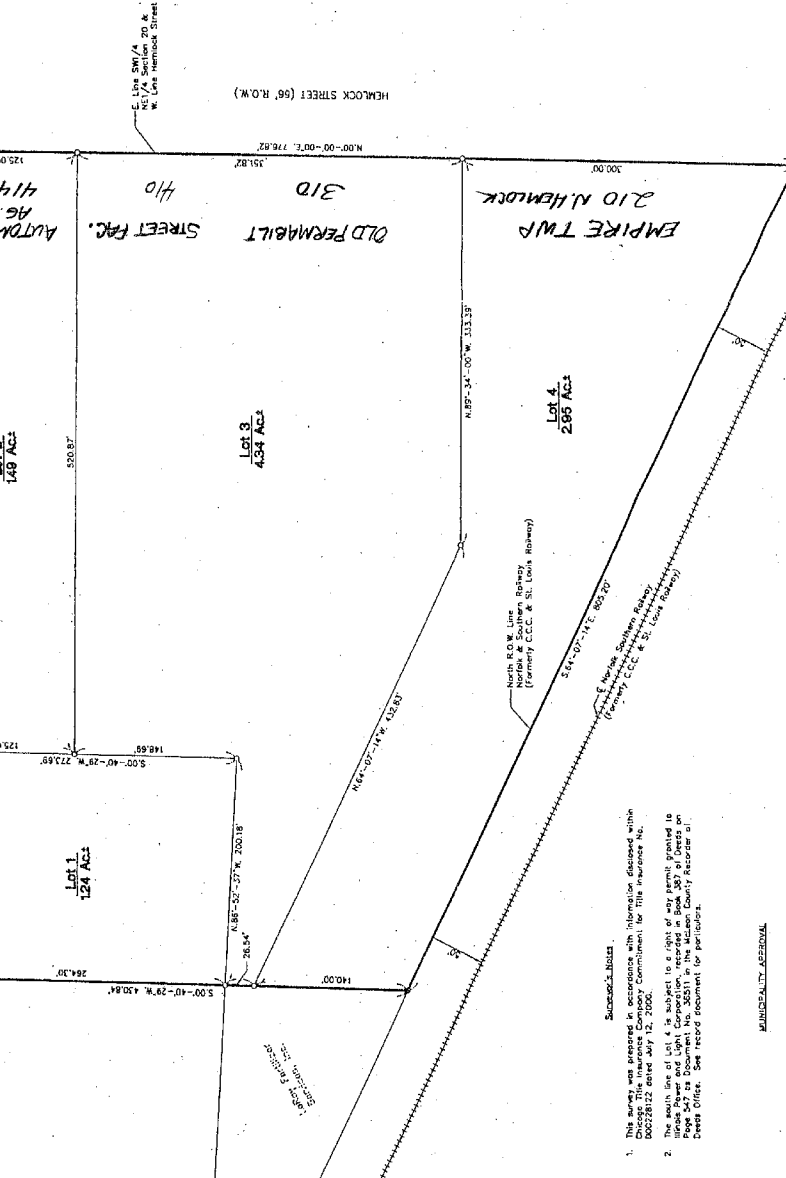


STYLECRAFT SUBDIVISION

A part of the SW1/4 of the NE1/4 of Section 20, T. 22 N., R. 4 E. S. P.M., City of LeRoy, McLean County, Illinois



Owner/Developer: City of LeRoy
207 S. East Street
LeRoy, Illinois 61722
Ph: (309) 462-3431



SUBDIVISION CERTIFICATE

STATE OF ILLINOIS } SS
COUNTY OF MCLEAN }

I, Perry L. Lewis, Illinois Professional Land Surveyor No. 1874, do hereby certify that the foregoing plat, map, and measurements were prepared in accordance with the laws of the State of Illinois and with the Ordinance of the City of LeRoy, McLean County, Illinois, for the City of LeRoy and represents the following:

1. That the plat, map, and measurements were prepared in accordance with the laws of the State of Illinois and with the Ordinance of the City of LeRoy, McLean County, Illinois, for the City of LeRoy and represents the following:
 a. That the plat, map, and measurements were prepared in accordance with the laws of the State of Illinois and with the Ordinance of the City of LeRoy, McLean County, Illinois, for the City of LeRoy and represents the following:
 b. That the plat, map, and measurements were prepared in accordance with the laws of the State of Illinois and with the Ordinance of the City of LeRoy, McLean County, Illinois, for the City of LeRoy and represents the following:
 c. That the plat, map, and measurements were prepared in accordance with the laws of the State of Illinois and with the Ordinance of the City of LeRoy, McLean County, Illinois, for the City of LeRoy and represents the following:

I further certify that the foregoing plat, map, and measurements were prepared in accordance with the laws of the State of Illinois and with the Ordinance of the City of LeRoy, McLean County, Illinois, for the City of LeRoy and represents the following:

I further certify that the foregoing plat, map, and measurements were prepared in accordance with the laws of the State of Illinois and with the Ordinance of the City of LeRoy, McLean County, Illinois, for the City of LeRoy and represents the following:

I further certify that the foregoing plat, map, and measurements were prepared in accordance with the laws of the State of Illinois and with the Ordinance of the City of LeRoy, McLean County, Illinois, for the City of LeRoy and represents the following:

Lewis, Vockroy & Brown, Inc.
Consulting Engineers & Land Surveyors
232 North Main Street
LeRoy, Illinois 61722
Ph: (309) 462-3431

Perry L. Lewis
Perry L. Lewis
Illinois Professional Land Surveyor No. 1874



- Subdivisor's Notes:
- This survey was prepared in accordance with information disclosed within Block 28122 entered July 12, 2007. Commitment for this information is 000228122 entered July 12, 2007.
 - The south line of Lot 4 is subject to a right of way permit granted to Illinois Power and Light Corporation, recorded in Book 303 of Deeds on page 100, and subject to a right of way permit granted to Illinois Power and Light Corporation, recorded in Book 303 of Deeds on page 100. See record document for particulars.

MUNICIPALITY APPROVAL

We, the undersigned, Mayor and City Clerk of the City of LeRoy, McLean County, Illinois, do hereby certify that this plat of Stylecraft Subdivision in the City of LeRoy, McLean County, Illinois, was approved by the City on 02/18/2008.

Robert Rick, Mayor
Sue Wilson, City Clerk

Lewis, Vockroy & Brown, Inc.
Consulting Engineers & Land Surveyors
232 North Main Street
LeRoy, Illinois 61722
Ph: (309) 462-3431

02/18/2008
Perry L. Lewis
Illinois Professional Land Surveyor No. 1874

Stylecraft Subdivision
Final Plat
City of LeRoy, McLean County, IL