

CITY OF LEROY  
COUNTY OF MCLEAN  
STATE OF ILLINOIS

ORDINANCE NO. 627

AN ORDINANCE APPROVING FINAL SUBDIVISION PLAT FOR  
COUNTRYSIDE ESTATES SUBDIVISION FIRST ADDITION TO THE CITY OF LEROY,  
ILLINOIS.

---

ADOPTED BY THE CITY COUNCIL OF THE CITY OF LE ROY THIS 18th  
DAY OF September, 1995.

PRESENTED: September 18, 1995

PASSED: September 18, 1995

APPROVED: September 18, 1995

RECORDED: September 18, 1995

PUBLISHED: September 18, 1995

In Pamphlet Form

Voting "Aye" 6

Voting "Nay" 0

---

The undersigned being the duly qualified and acting City Clerk of the City of LeRoy does hereby certify that this document constitutes the publication in pamphlet form, in connection with and pursuant to Section 1-2-4 of the Illinois Municipal Code, of the above-captioned ordinance and that such ordinance was presented, passed, approved, recorded and published as above stated.

(SEAL)

X Jeanette Bagley  
City Clerk of the City of LeRoy,  
McLean County, Illinois

Dated: September 18, 1995.

AN ORDINANCE APPROVING FINAL SUBDIVISION PLAT FOR  
COUNTRYSIDE ESTATES SUBDIVISION FIRST ADDITION TO THE CITY OF LEROY,  
ILLINOIS.

WHEREAS, the Mayor and City Council of the City of LeRoy have reviewed the proposed final plat of subdivision for Countryside Estates Subdivision First Addition to the City of LeRoy; and

WHEREAS, the Mayor and City Council of the City of LeRoy, McLean County, Illinois, an Illinois Municipal Corporation, have determined that said final plat meets all requirements of the subdivision code of the City of LeRoy, and that the approval of said proposed final plat is in the best interest of the City and its residents,

NOW, THEREFORE, BE IT ORDAINED by the City Council of the City of LeRoy, Illinois, in lawful meeting assembled, as follows:

Section 1. That the final plat of Countryside Estates Subdivision First Addition to the City of LeRoy, a copy of which is attached hereto as Exhibit A, and incorporated herein by reference, is hereby approved.

Section 2. The Mayor and City Clerk are hereby directed to execute all necessary documents and certificates as may be appropriate in order to evidence the approval by the City of LeRoy of the aforesaid proposed final plat, and to cause and direct the developer to record said final plat promptly. Upon recording the same the developer shall provide copies of said recorded plat as may be appropriate to the City for record purposes.

Section 3. This ordinance shall be in full force and effect from and after its passage, approval and publication in pamphlet form, as required by law.

PASSED by the City Council of the City of LeRoy, Illinois, upon the motion by

Ronnie Litherland, seconded by Dawn Thompson

, by roll call vote on the 18th day of September, 1995, as follows:

Aldermen elected 6 Aldermen present 6

VOTING AYE:

David McClelland, Lois Parkin, Ronnie Litherland, Dawn Thompson, George Cook  
(full names) Fred Dodson

VOTING NAY:

None  
(full names)

ABSENT, ABSTAIN, OTHER:

None

(full names)

and deposited and filed in the office of the City Clerk in said municipality on the 18th day of  
September, 1995.

X Juanita Dagley  
Juanita Dagley, City Clerk of the City of LeRoy,  
LeRoy, McLean County, Illinois

**APPROVED BY** the Mayor of the City of LeRoy, Illinois, this 18th day of

September, 1995.

X Jerry C. Davis  
Jerry C. Davis, Mayor of the City of LeRoy,  
McLean County, Illinois

ATTEST: (SEAL)

X Juanita Dagley  
Juanita Dagley, City Clerk, City of LeRoy,  
LeRoy, McLean County, Illinois

**CERTIFICATE**

I, Juanita Dagley, certify that I am the duly elected and acting municipal clerk of the City of LeRoy, of McLean County, Illinois.

I further certify that on September 18, 1995, the Corporate Authorities of such municipality passed and approved Ordinance No. 627, entitled:

AN ORDINANCE APPROVING FINAL SUBDIVISION PLAT FOR  
COUNTRYSIDE ESTATES SUBDIVISION FIRST ADDITION, TO THE CITY OF LEROY,  
ILLINOIS,

which provided by its terms that it should be published in pamphlet form.

The pamphlet form of Ordinance No. 627, including the Ordinance and a cover sheet thereof, was prepared, and a copy of such Ordinance was posted at the municipal building, commencing on September 18, 1995, and continuing for at least ten days thereafter. Copies of such Ordinance were also available for public inspection upon request in the office of the municipal clerk.

Dated at LeRoy, Illinois, this 18th day of September, 1995

(SEAL)

Juanita Dagley  
Municipal Clerk

STATE OF ILLINOIS        )  
                                  ) SS:  
COUNTY OF McLEAN        )

I, Juanita Dagley, do hereby certify that I am the duly qualified and acting City Clerk of the City of LeRoy, McLean County, Illinois, and as such City Clerk that I am the keeper of the records and files of the Mayor and the City Council of said City.

I do further certify that the foregoing is a true, correct and complete copy of an ordinance entitled:

AN ORDINANCE APPROVING FINAL SUBDIVISION PLAT FOR  
COUNTRYSIDE ESTATES SUBDIVISION FIRST ADDITION, TO THE CITY OF LEROY,  
ILLINOIS.

I do further certify said ordinance was adopted by the City Council of the City of LeRoy at a regular meeting on the \_\_\_\_ day of \_\_\_\_\_, 1995, and prior to the making of this certificate the said ordinance was spread at length upon the permanent records of said City where it now appears and remains as a faithful record of said ordinance in the record books.

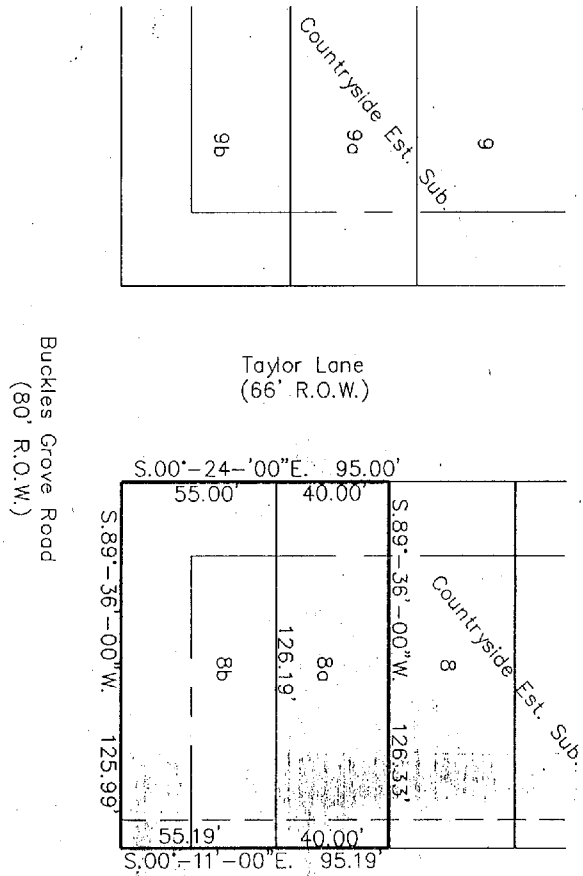
Dated this \_\_\_\_\_ day of \_\_\_\_\_, 1995.

X \_\_\_\_\_  
City Clerk

(SEAL)

# Countryside Estates Subdivision First Addition

A Re-Subdivision Of Lot 13 Of Central Prairies Commercial Park  
 As Shown On The Plat Recorded April 16, 1981, As Document No. 81-3119.  
 City Of LeRoy, McLean County, IL  
 Gross Area = 0.28+ Acres

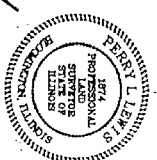


Scale: 1" = 40'

- LEGEND
- Subdivision Boundary
  - Zero Lot Line
  - 25' Building Setback
  - - - Utility Easement Limits

Date: 9/16/85  
 Perry L. Lewis

Perry L. Lewis  
 Illinois Professional Land Surveyor No. 1874



Lewis, Yockley & Brown, Inc. Consulting Engineers & Land Surveyors 505 North Main Street Bloomington, Illinois Ph. (309) 828-2522	PROG	DATE	PLAT	REVISION
Countryside Estates Sub. First Add. Final Plat				
456501				

Exhibit A