

**CITY OF LE ROY
COUNTY OF McLEAN, STATE OF ILLINOIS**

ORDINANCE NO. 03-08-03-52

**AN ORDINANCE APPROVING FINAL SUBDIVISION PLAT FOR
CLARKE SUBDIVISION TO THE CITY OF LE ROY, MC LEAN COUNTY,
ILLINOIS.**

**ADOPTED BY THE CITY COUNCIL OF THE CITY OF LE ROY THIS
18TH DAY OF AUGUST, 2003**

PRESENTED: AUGUST 18, 2003

PASSED: AUGUST 18, 2003

APPROVED: AUGUST 18, 2003

RECORDED: AUGUST 18, 2003

PUBLISHED: AUGUST 18, 2003

In Pamphlet Form

Voting "Aye" (7)

Voting "Nay" (0)

The undersigned being the duly qualified and Acting City Clerk of City of Le Roy does hereby certify that this document constitutes the publication in pamphlet form, in connection with a pursuant to Section 1-2-4 of the Illinois Municipal Code, of the above-captioned ordinance and that such ordinance was presented, passed, approved, recorded, and published as above stated.

(SEAL)



**City Clerk of the City of Le Roy,
McLean County, Illinois**

Dated: August 18, 2003.

ORDINANCE NO. 03-08-03-52

**AN ORDINANCE APPROVING FINAL SUBDIVISION PLAT
FOR CLARKE SUBDIVISION
TO THE CITY OF LE ROY, MCLEAN COUNTY, ILLINOIS**

WHEREAS, the Mayor and City Council of the City of Le Roy, McLean County, Illinois, an Illinois Municipal Corporation, have reviewed the proposed final plat of subdivision for Clarke Subdivision Addition to the City of Le Roy; and

WHEREAS, the Mayor and City Council of the City of Le Roy have determined that said final plat meets all requirements of the subdivision code of the City of Le Roy, and that the approval of said proposed final plat is in the best interests of the city and its residents; and

WHEREAS, the Mayor and City Council of the City of Le Roy have not received a bond, proposed bond, irrevocable letter of credit or proposed irrevocable letter of credit in order to determine if the same is in due form and properly executed in satisfaction of the requirements of Title 11 Subdivision Regulations, Chapter 2 Subdivision Plats and Procedures, Section 3 Final Plat C Supporting Documentation (5) of the Municipal Code of the City of Le Roy, Illinois 2003 (as amended),

NOW, THEREFORE, BE IT ORDAINED, by the City Council of the City of Le Roy, Illinois, in lawful meeting assembled, as follows:

Section 1: Grading plan and profiles showing the existing centerline elevations of all streets and alleys in the subdivision and the centerline elevations of pavements to be constructed. Elevations shall be referred to some permanent benchmark. Profiles shall be drawn to a horizontal scale of fifty feet to one inch (50' = 1") and vertical scale of five feet to one inch (5' = 1"). [11-2-3C1]

Section 2: A detailed statement by the sub-divider setting forth the nature, kind, character and extent of all the improvements that will be constructed in the subdivision, together with complete plans, profiles and specifications clearly describing the same, with agreement to construct the same in accordance therewith, at his own expense, within the time limit fixed by the council. [11-2-3C2]

Section 3: A statement by a competent engineer giving an estimate of the total cost of the construction or installation of all such improvements, including the cost of engineering and inspections. [11-2-3C3]

Section 4: A certificate by the city administrator or his designee certifying that the improvements described in the sub-divider's statement and as shown by the plans, profiles and specifications, meet the minimum requirements of this title, and that the estimate of cost of construction and installation is his opinion is substantially correct. [11-2-3C4]

Section 5: A duly executed completion bond by the sub-divider, with corporate surety, to be approved by the city council, to be filed with the city clerk in an amount equal to the estimate of the costs of construction of all said improvements, certified by the city attorney as good, valid and enforceable by the city, securing the satisfactory completion of all said improvements in accordance with the description, plans, profiles and specifications submitted by the sub-divider and approved by the city council. [11-2-3C5]

Section 6: The final plat of Clarke Subdivision to the City of Le Roy, McLean County, Illinois, a copy of which is attached hereto as **Exhibit A**, and incorporated herein by reference, is hereby approved, subject to those conditions as set forth hereinafter.

Section 7: This ordinance shall be in full force and effect from and after its passage, approval and publication, as required by law.

PASSED by the City Council of the City of Le Roy, Illinois, upon the motion by Dave McClelland, seconded by Jerry Henson, by roll call vote on 18th day of August, 2003, as follows:

Council members elected 8 Council members present 7

VOTING AYE:

Dave McClelland, Jerry Henson, Dawn Thompson, Butch Cook, Theresa O'Hare,

Chad Farischon, Gary Koerner

VOTING NAY:

None

ABSENT, ABSTAIN, OTHER:

John Haney

and deposited and filed in the Office of the City Clerk in said municipality on the 18th day of August, 2003.



Sue Marcum, City Clerk of the
City of Le Roy, McLean County, IL

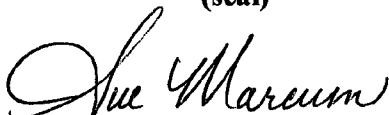
APPROVED BY the Mayor of the City of Le Roy, Illinois, the 18th day of August, 2003.



Robert Rice, Mayor of the
City of Le Roy, McLean County, IL

ATTEST:

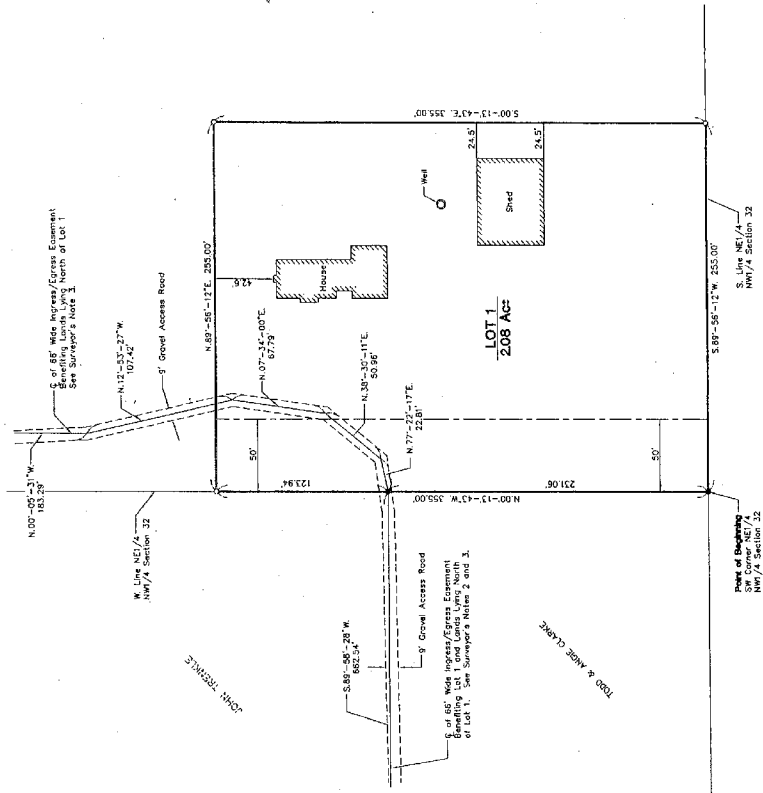
(seal)



Sue Marcum, City Clerk of the
City of Le Roy, McLean County, IL

CLARKE SUBDIVISION

A part of the NE1/4 of the NW1/4 of Section 32, T. 22 N., R. 4 E., 3 P.M., City of LeRoy, McLean County, Illinois



MUNICIPALITY ASSOCIATION
 The undersigned represents the City of LeRoy, McLean County, Illinois, and certifies that the plat of the Clarke Subdivision in the City of LeRoy was approved by the City Council on this _____ day of _____, 2003.

Robert Ross, Mayor
 Eric Mearns, City Clerk

SUBDIVISION CERTIFICATE

STATE OF ILLINOIS) SS
 COUNTY OF McLEAN)

I, Bruce G. Stoffer, Illinois Professional Land Surveyor No. 2888, do hereby certify that the attached plat of subdivision was surveyed and prepared under my direction in accordance with the laws of the State of Illinois and the Code of Professional Ethics of the Board of Professional Land Surveyors, and represents the following description of property to wit:

A part of the NE1/4 of the NW1/4 of Section 32, Township 22 North, Range 4 East of the Third Principal Meridian, City of LeRoy, McLean County, Illinois, more particularly the NW1/4 of Section 32, Township 22 North, Range 4 East of the Third Principal Meridian, City of LeRoy, McLean County, Illinois, on the west line of said NE1/4 of the NW1/4 of Section 32, Township 22 North, Range 4 East of the Third Principal Meridian, City of LeRoy, McLean County, Illinois, a tract of land 66 feet of even width across, one acre and through a part of the E1/4 of the NW1/4 of Section 32, Township 22 North, Range 4 East of the Third Principal Meridian, City of LeRoy, McLean County, Illinois, lying 32 feet from one corner of the NW1/4 of Section 32, Township 22 North, Range 4 East of the Third Principal Meridian, City of LeRoy, McLean County, Illinois, to the Point of Beginning, more or less, with assumed bearings given for description purposes only.

I further certify that I have subdivided the same into 1st as shown on the attached plat.

Iron measurements are given in feet and decimals hereof.

Said subdivision is to be known as Clarke Subdivision, City of LeRoy, McLean County, Illinois.

I further certify that the foregoing plat accompanying this certificate accurately represents the above described property as subdivided.

I further certify that no part of said herein described subdivision is located within a special flood hazard area as identified by the Federal Emergency Management Agency.



Lewis, Yockley & Brown, Inc.
 Consulting Engineers & Land Surveyors
 225 E. Center Street
 LeRoy, IL 61754

031607003
 Date

Illinois Professional Land Surveyor No. 2888
 License Expiration Date 11/06/2008

Lewis, Yockley & Brown, Inc.
 Consulting Engineers & Land Surveyors
 405 North Main Street
 @ Shawnee/LeRoy, Illinois
 Ph: (202) 897-2552 Fax: (202) 862-9441

152 South 5th Street
 @ LeRoy, Illinois
 Ph: (202) 897-2552

Clarke Subdivision
 Final Plat
 LeRoy, Illinois

1 of 1

1409.01